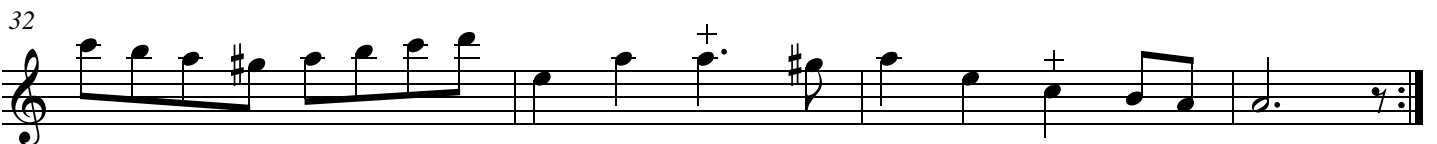
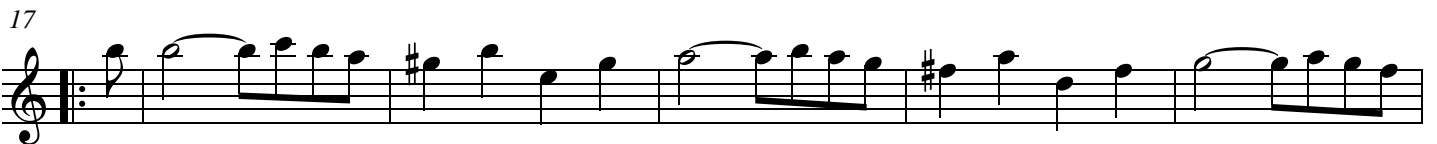


# Suite Nr. 1

Flûte à bec alto

*Daniel Demoivre*

## 1. Allemande



## 2. Gavotte



Musical score for Gavotte, measures 1-18. The piece is in G major and 3/4 time. The notation consists of five staves of music. The first staff (measures 1-4) begins with a treble clef, a key signature of one sharp (F#), and a 3/4 time signature. The melody starts with a quarter note G4, followed by quarter notes A4 and B4, then eighth notes G4-A4-B4-G4. The second staff (measures 5-8) continues the melody with eighth notes and quarter notes, ending with a repeat sign. The third staff (measures 9-12) features a more active eighth-note pattern. The fourth staff (measures 13-17) continues with eighth notes and quarter notes. The fifth staff (measures 18) concludes the piece with a final quarter note G4 and a repeat sign.

## Sarabande



Musical score for Sarabande, measures 1-19. The piece is in G major and 3/4 time. The notation consists of four staves of music. The first staff (measures 1-6) begins with a treble clef, a key signature of one sharp (F#), and a 3/4 time signature. The melody starts with a quarter note G4, followed by quarter notes A4 and B4, then eighth notes G4-A4-B4-G4. The second staff (measures 7-12) continues the melody with quarter notes and half notes, ending with a repeat sign. The third staff (measures 13-18) continues with quarter notes and half notes. The fourth staff (measures 19) concludes the piece with a final quarter note G4 and a repeat sign.

#### 4. Gigue



7



14



20



#### 5. Bourrée



6



12



18



24

